

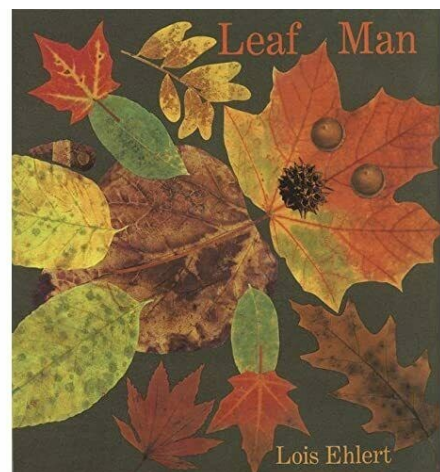
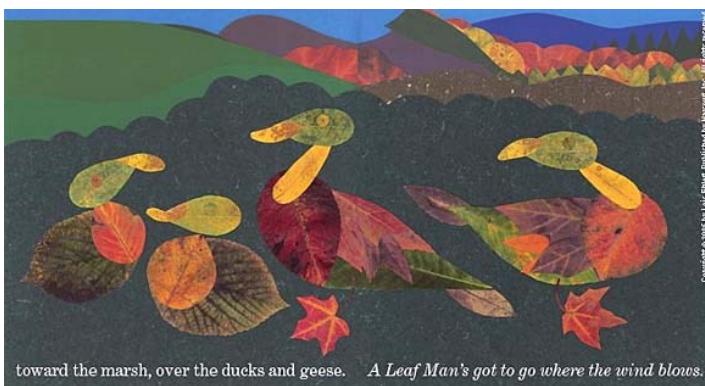
Our Week in St George's Early Years

w/b 10/10/2022

We began our new topic of 'Welcome'. We answered the 'Big Question' 'Why is welcome important?' We role played welcoming new friends into our class and made welcome cards for our friends and family. We thought about how people feel when they are welcomed and all agreed it is better to welcome people as it makes us feel 'happy' and 'loved.'

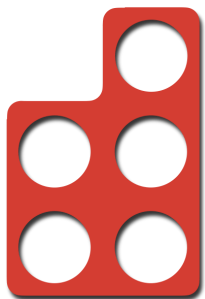


We have a new key text this week: Leaf Man. We have enjoyed looking at the different leaf animals in the book, identifying them and counting how many there are of each. We collected leaves outdoors and looked at the different colours. We know yellow, red, orange and brown are Autumn leaf colours.



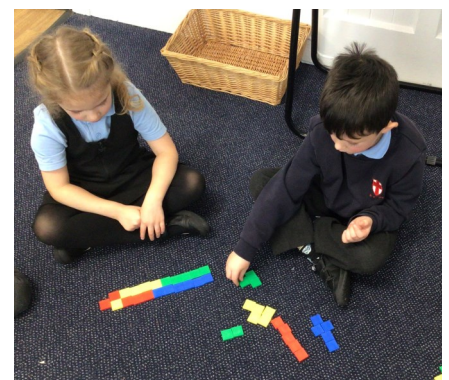
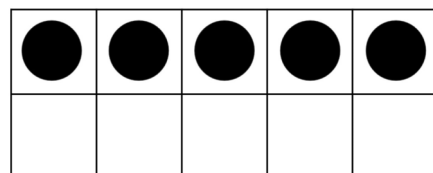
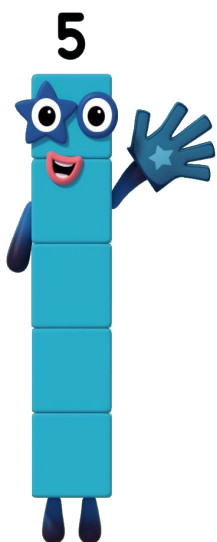
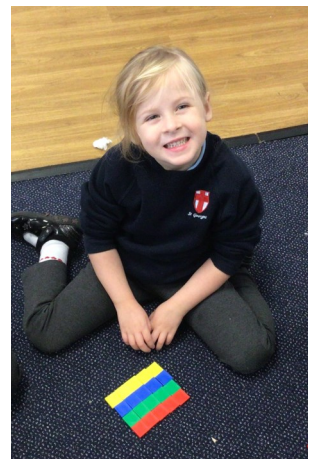
Reception have been continuing to learn new letters, sounds and rhymes with Read Write Inc. This week we learned: f e l h r. We are a lot more confident at 'Fred Talking' words and using our 'Fred Fingers.' We have labelled pictures in our writing book and worked on our letter formation. We have also enjoyed writing words ourselves during choosing time, practising all we have learned so far — very impressive!

Nursery have been learning new Nursery Rhymes, using the props in the Nursery Rhyme baskets to help us. Our favourites this week are 'Old McDonald' and '5 Little Monkeys.'



Reception have been learning all about the number 5: we can recognise number 5, compose number 5 and write number 5.

Nursery have been building using different sized blocks. We have used words like 'tall' and 'small' and compared the sizes of lots of different toys and objects.



We designed, made and put up our Kindness Gospel Values display in the hall. We made hand print green grass, drew pictures displaying kindness in different ways and collaged a bee, butterfly and ladybird to add to the wall.



Dinosaurs in
'Jelly Baff'.



Autumn jigsaw.



In Early Years we have collected leaves and made some leaf art for display.

